

## AC600 High Power Wireless Dual Band USB Adapter

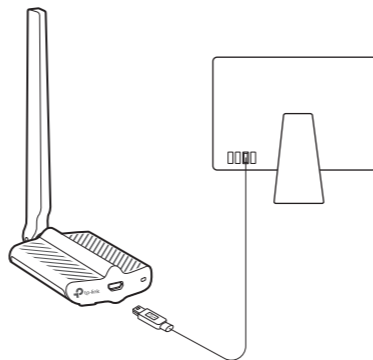
MODEL NO. Archer T2UHP



For Mac OS X

### 1 Connect to a Computer

Install the antenna and connect the adapter to your computer using the USB cable provided.



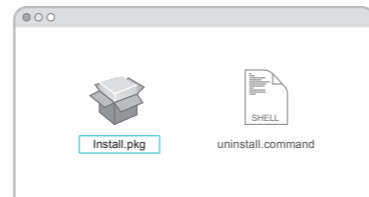
### 2 Install Driver and Utility

a. Download the driver and utility from this product's Support page at [www.tp-link.com](http://www.tp-link.com).

Note:  
If your computer has a CD drive, you can also run the included CD to install the driver and utility.

b. Unzip the downloaded folder and run the **Install.pkg**.

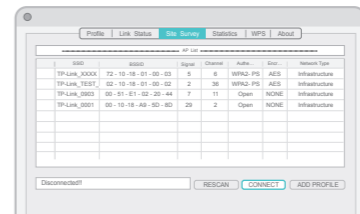
c. Follow the instructions to complete the installation.



### 3 Join a Wireless Network

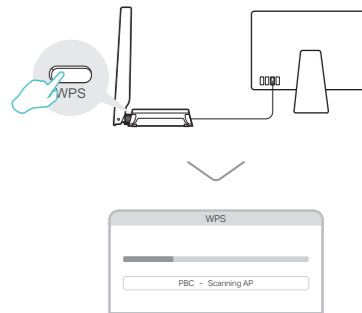
#### Option 1: Via TP-Link Utility

- Select **Site Survey** tab of the pop-up utility window.
- Select your Wi-Fi network and click **CONNECT**. The connection status can be viewed on the Link Status tab.



#### Option 2: Via Wi-Fi Protected Setup (WPS)

- Press the WPS button on your router.
- Within 2 minutes, press and hold the WPS button on the adapter until the WPS progress indicator bar appears.

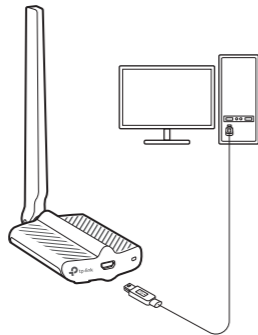


c. When you are prompted "PBC - Get WPS profile successfully", it is complete.

## For Windows

### 1 Connect to a Computer

Install the antenna and connect the adapter to your computer using the USB cable provided.



Note:  
In Windows XP, a Found New Hardware Wizard window will appear when the adapter is detected. Please click **Cancel**.

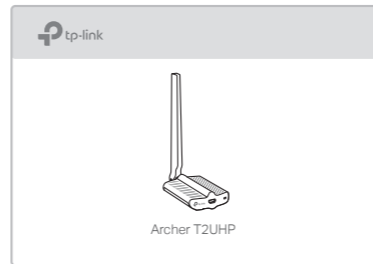
### 2 Install Driver and WPS Tool

a. Insert the CD and run the **Autorun.exe**.

Note:  
You can also download the driver from this product's Support page at [www.tp-link.com](http://www.tp-link.com).

b. Select **Archer T2UHP** and follow the steps to install the driver and WPS Tool.

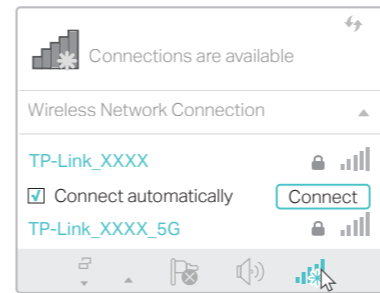
Note:  
If you can't install the driver successfully, disable the antivirus software and firewall, then try again.



### 3 Join a Wireless Network

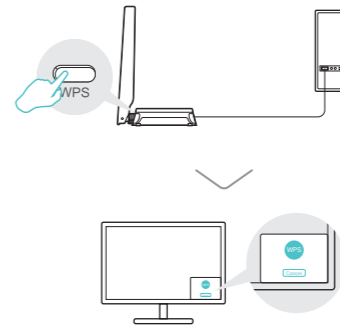
**Option 1: Via Windows Wireless Utility**

- Click the network icon (📶 or 📶) on the taskbar.
- Select your Wi-Fi network, click **Connect** and enter the password when prompted.



**Option 2: Via WPS Tool**

- Press the WPS button on your router.
- Within 2 minutes, press and hold the WPS button on the adapter until WPS Tool opens.



c. When the "Success!" message appears, your computer is connected to Wi-Fi.

For detailed instructions, please refer to the User Manual from this product's Support page at [www.tp-link.com](http://www.tp-link.com).  
For technical support and other information, please visit <http://www.tp-link.com/support>, or simply scan the QR code.

This USB Adapter can only be powered by computers that comply with Limited Power Source (LPS).



©2017 TP-Link